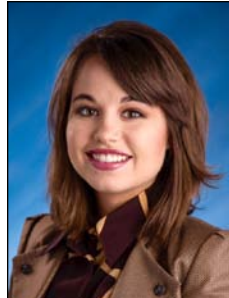




## CONGRATULATIONS TO OUR NEWLY ELECTED 2017 BOARD MEMBERS!

**Ashlen Thomason, MS, CCC-SLP**  
(President-Elect)



**Cliff Franklin, PhD, CCC-A, FAAA**  
(VP Audiology & Hearing Services)

**Melanie Lowry, PhD, CCC-SLP**  
(VP-Elect for Continuing Education)



**Charity Bohannon, MCD, CCC-SLP**  
(Secretary)

They will be joining returning Board Members: Jeff Adams (President), Kami Rowland (Past President), Chenell Loudermill (VP for SLP Services), Alicia Davidson (VP Continuing Education), and Amy Shollenbarger (Treasurer).

## President's Message

Kami Rowland,  
MS, CCC-SLP



I cannot believe that we are about to close the books on another year and soon I'll be stepping down as your ArkSHA President. I can't begin to tell you what this past year has meant to me to serve and represent such a great group of professionals. ArkSHA has been a part of some amazing things over the year. We've advocated for our roles and our clients, both at the state and the national level with the help of our lobbyists Randy Thurman and Courtney Sheppard, as well as our ASHA Liaison Cheri Frailey. ArkSHA applied for and was awarded some phenomenal grants through ASHA: the Student Advocacy Grant and the Pathway to Excellence Grant. Melodee Owens spearheaded our first Student Advocacy Day, and we were so impressed by the graduate students who will soon join the profession; they represented their schools well. We had a record return on our SLPs in the Schools survey and formed an adhoc committee which began work on the state's first ever Roles and Responsibilities for SLPs in the Schools document this summer. Chenell Loudermill and I attended the monthly Task Force for Special Education Responsibilities meetings beginning in January, and we presented on our scope of practice and helped the committee write recommendations that were provided to Governor Hutchinson by Senator Lindsey. Jeff Adams, Cheri Stevenson, and Melodee Owens have continued to work tirelessly through the Task Force of Pediatric Health Professions on behalf of not only our profession, but related professions regarding

Continued on page 3

# ArkSHA 2016 BOARD OF DIRECTORS

## ArkSHA MISSION STATEMENT

Connecting, learning and communicating with audiologists, speech-language pathologists, future professionals and consumers through:

Advocacy  
Education  
Mentoring  
Networking  
Resources

### PRESIDENT

**Kami Rowland**  
Hall High School  
Little Rock, AR  
(501) 766-3301  
kamela.rowland@lrstd.org

### IMMEDIATE PAST PRESIDENT

**Melodee Owens**  
Specialized Therapy & Consultation of AR  
Sheridan, AR  
(870) 480-7055  
melodee.owens@hotmail.com

### PRESIDENT-ELECT

**Jeffrey Adams**  
Easter Seals Arkansas - Outreach  
Little Rock, AR  
(501) 221-8437  
jadams@eastersealsar.com

### TREASURER

**Amy Shollenbarger**  
Arkansas State University  
Jonesboro, AR  
(870) 972-2703  
ashollenbarger@astate.edu

### SECRETARY

**Joy Good**  
Arkansas State University  
Jonesboro, AR  
(870) 972-3147  
jgood@astate.edu

### VICE PRESIDENT AUDIOLOGY & HEARING SERVICES

**Natalie Benafield**  
UCA Dept of Communication  
Sciences & Disorders  
Conway, AR  
(501) 450-5484  
nbenafield@uca.edu

### VICE PRESIDENT SPEECH-LANGUAGE PATHOLOGY SERVICES

**Chenell Loudermill**  
UALR/UAMS  
Little Rock, AR  
(501) 683-7641  
cloudermill@uams.edu

### VICE PRESIDENT CONTINUING EDUCATION

**Charity Bohannon**  
Reach Pediatric  
Benton, AR  
(501) 303-8553  
charityr@reachpediatric.com

### VICE PRESIDENT - ELECT CONTINUING EDUCATION

**Alicia Davidson**  
Sheridan School District  
Sheridan, AR  
(870) 942-2135  
aliciadavidson@yahoo.com

### SLP AND AUD ADVISORY BOARD

**Dee Lance**  
UCA Dept of Communication  
Sciences & Disorders  
Conway, AR  
dlance@uca.edu

**Natalie Benafield**  
UCA Dept of Communication  
Sciences & Disorders  
Conway, AR  
(501) 450-5484  
nbenafield@uca.edu

### LOBBYISTS

**Courtney Sheppard**  
fcsheppard@comcast.net

**Randy Thurman**  
thurman@arkansaslobbying.com

## INFORMATION CENTER

### ARKANSAS BOARD OF EXAMINERS IN SPEECH-LANGUAGE PATHOLOGY AND AUDIOLOGY

101 E. Capitol, Suite 211  
Little Rock, AR 72201  
(501) 682-9180 Office  
(501) 682-9181 Fax  
Email: ABESPA@ipa.net

www.abespa.com

### ARKANSAS MEDICAID WEBSITE www.medicaid.state.ar.us

### ARKANSAS DEPARTMENT OF EDUCATION (501) 682-4475 www.arkansased.org

### ARKANSAS DEPARTMENT OF HEALTH (501) 661-2328

### ASHA ACTION CENTER (800) 498-2071 www.asha.org

### ARKSHA OFFICE CONTACT INFORMATION

Account Executive:  
Marilyn Porterfield  
Best Association Management

P. O. Box 24103  
Little Rock, AR 72221

Phone: (501) 244-0621  
Fax: (501) 224-0988  
Email: arksha@arksha.org  
www.arksha.org

President's Message continued...

the Medicaid changes. ArkSHA's executive board attended the spring CSAP conference together in New Mexico, and I attended the fall CSAP conference in Philadelphia. Finally, Arkansas was named as the 2019 host for the spring CSAP conference\*.

The hard work of ArkSHA's Vice President of Continuing Education, Charity Bohannon, provided us with an incredible learning experience in Hot Springs at the 2016 ArkSHA Convention. The sessions were engaging with best practices and evidence-based research by speakers who are the best in their field. Incoming Vice President of Continuing Education, Alicia Davidson, is already hard at work to bring you another fabulous convention next fall. If you would like to serve in any capacity on the 2017 convention committee, please don't hesitate to contact me or another member of the ArkSHA board.

Since becoming an active member in ArkSHA almost 10 years ago, first on the convention committee and then moving through various board positions, I've seen the importance of being involved in your state organization. If you are just starting in an undergraduate or graduate program in our field, get involved in your school's NSSHLA chapter, and if you have graduated and started your career, get involved with ArkSHA; either join a committee or consider running for a future board position. Wherever you decide to plug in, the most important thing you can do for yourself, your profession, and our state, is to join ArkSHA as a student member or a professional member, or sponsor a student from one of the schools in our state. There is truly strength in numbers, and each of us play an important role in showcasing our profession.

I want to thank all of the board members who have supported and encouraged me over the years that I have served, and for Marilyn and her staff at Best Management for working behind the scenes to make sure that ArkSHA runs smoothly. To our lobbyists, Randy and Courtney, ArkSHA would not be as involved as it is legislatively without your eyes and ears keeping us informed of bills and other matters that can affect our profession. As I leave ArkSHA as President and begin a new and exciting experience as CSAP's newly elected President-Elect with Melodee Owens as their newly elected Secretary, I am encouraged that ArkSHA will continue to do great things, and am excited to see the leadership that Jeff Adams will bring to our organization. May each of you be able to look back on 2016, see where you've made a difference and anticipate the opportunities in 2017 where you find a way to continue to make our profession great!!

Happy New Year!!

Kamela Rowland, MS, CCC-SLP

\* In May of 2019 the Council of State Speech-Language-Hearing Association Presidents will hold their annual spring conference in Little Rock, Arkansas! The mission of CSAP is to provide leadership training for state Speech-Language-Hearing association presidents, to be a forum for collaboration and networking among these leaders and to promote communication of professional matters between state Speech-Language-Hearing associations, ASHA and other related national professional organizations.



Kami Rowland, MS, CCC-SLP received the **Rolland J. Van Hattum Contribution in Schools Award** at the 2016 ASHA National Convention in Philadelphia last month from Dr. Tom Campbell, ASHFoundation President.

As the 2015 recipient of the Paula Gober Public School Award from ArkSHA, Kami was nominated for the national award.

*Congratulations to ArkSHA members Kami Rowland and Melodee Owens for being elected to the 2017 CSAP board. Kami will serve as President-Elect and Melodee will serve as Secretary.*



## Child Poster Ambassador

Paige Dewey

Paige was nominated by Elisha Strick, MS CCC-SLP Greenbrier School District.

Paige is a beautiful energetic six year old girl who attends Eastside Elementary in Greenbrier, AR. She was born a healthy baby. While developmental milestones involving language were somewhat delayed, all other milestones were achieved within normal limits. As a toddler she was pretty healthy with the exception of ear infections.

At the age of 3, Paige's parents David and Jacque noticed her belly was growing. After several trips to their family doctor, they made a trip to Arkansas Children's Hospital. They then learned the horrible news that their little girl had a tumor growing inside her belly. She was diagnosed with a rare cancer, specifically Stage 4 Yolk Sac tumor. Over the next several months Paige went through a biopsy, tumor removal, chemo port placement, blood transfusions, 4 rounds of chemotherapy and chemo port removal. God heard the prayers of many and her parents were given the wonderful news that she was cancer free in March 2013. As a result of the powerful chemotherapy, she was diagnosed with bilateral high frequency sensorineural hearing loss. She was lined up with Audiologist Rachel Sievers at ACH, who fitted her with hearing aids and continues to work closely with the family. She is also being followed by Jessica Newman through the EARS program.

Paige started Greenbrier's ABC preschool program in the fall of 2014 and received speech therapy through the Arch Ford Coop. Her teachers and therapist

reported at the end of the school year that she struggled with letter identification, speaking in complete sentences, asking and answering questions and speech discrimination tasks. They noticed that she did not parallel play with the other students.

Paige started kindergarten in the fall of 2015, continuing speech therapy with focus on auditory

discrimination tasks. She received a personal FM system and modifications to help her be successful in the classroom. Mrs. Mahan, Paige's kindergarten teacher, states that "being a general education classroom teacher, knowing I would have 20 students in class this year, I was a little apprehensive at Paige's incoming Kindergarten screening scores. She scored very low in several areas including letter id, number recognition, MAP testing, and our vocabulary screener. I have been overwhelmed at the academic gains that Paige has made this year. Through hard work and perseverance throughout this year she is now near the top of the class. She received the Literacy Award for the year and was recognized as our Student of the Month for the character word "perseverance". She amazes me with her independence in putting in her hearing aids, reminding me to use her FM system, and even replacing the batteries in her hearing aids when needed.

Paige has a beautiful smile, personality, and attitude and it is contagious to all who are around her. She speaks of her cancer and the effects of it (hearing loss) often, and is able to explain it very clearly to anyone who has questions".

Great gains were made in speech this year. Although her main focus in therapy was auditory discrimination, activities that involved memory were utilized to enhance her memory skills. She participated in group therapy and individual therapy. She talks with confidence and participates in group discussions. She put forth her best effort, showing a very competitive side which resulted in mastering her speech goal and objectives.

Outside of school she enjoys playing with her friends, dance classes, participating in running clinics with her family and watching cooking and cake designing videos.

In closing I will say Paige has truly inspired me to stay strong, focused and never give up. I know she will continue to show perseverance in everything she does. She truly is an amazing kid!



## Frank R. Kleffner Clinical Career Award

Debbie Ware, MA, CCC-SLP

ArkSHA is proud to announce Debbie Ware, M.A., CCC-SLP as the recipient of the 2016 Frank R. Kleffner Clinical Career Award.

Debbie was nominated by Jeffrey C. Adams, Ed.D., CCC-SLP.

Debbie's career spans many years following her graduation from the University of Arkansas. Debbie began her career in the San Diego Unified School District in San Diego, CA. During her 16 years with the district she worked as an itinerant speech-language pathologist, a special day class teacher and a diagnostic resource teacher. She also participated in a 3 year multi-agency grant project in San Diego County that resulted in her being named the lead implementer on a team that opened the first pre-school classroom for children with Autism using evidence-based practice. Debbie returned home to Arkansas in 2006 and is currently working as a state-wide consultant with Easter Seals of Arkansas - Outreach Program. She is part of a team that provides hands-on consultation to teachers and therapists across the entire state of Arkansas. In addition, she is the coordinator of two week-long summer trainings called Behavioral Approaches using STAR Implementation and Coaching (BASIC) and CONNECT—Evidence Based Practices to Classroom Curriculum. Debbie is also a trainer for STAR Autism Support and travels the country training others about this curriculum for children with Autism. She has trained hundreds of speech-language pathologists, special educators and school administrators in Arkansas. Our state is fortunate to have an SLP of Debbie's caliber modeling, coaching, and providing hands-on experience to school professionals who work with children with Autism.

### Scholarship Donation Form

We are able to offer scholarships to our student members each year thanks to your generous donations throughout the year, and our social and auction at the convention. You can donate in honor of or in memory of someone, if you choose. Current students are the future of our industry, and we are glad we are able to support them when needed.

Name: \_\_\_\_\_ Phone: \_\_\_\_\_

Address: \_\_\_\_\_ City: \_\_\_\_\_ ST: \_\_\_\_ Zip: \_\_\_\_\_

Email: \_\_\_\_\_

I would like to make a contribution to the ArkSHA Scholarship Fund in the amount of \$ \_\_\_\_\_

In Memory  In Honor of: \_\_\_\_\_

Check #: \_\_\_\_\_

Visa/MasterCard # \_\_\_\_\_ - \_\_\_\_\_ - \_\_\_\_\_

Exp Date: \_\_\_\_\_ CVV: \_\_\_\_\_

Name on Card: \_\_\_\_\_

Billing Address (if diff from above): \_\_\_\_\_

Mail this form with check payable to ArkSHA at:

**P.O. BOX 24103  
LITTLE ROCK, AR 72221  
or FAX to 501-224-0988**

Visit [www.arksha.org](http://www.arksha.org) to  
make your nomination for 2017!

## 2016 Graduate Student Scholarship

Taylor Wentz received the 2016 ArkSHA Graduate Student Scholarship. Taylor is in her second year in the Masters program at the University of Central Arkansas and will graduate in August 2017.

We look forward to seeing the things that Taylor will accomplish in the years to come!



Thank you to Charity for her hard work in planning the 2016 Annual Convention. She helped bring in a variety of speakers to try to appeal to different areas of specialty for our attendees.



Kami was presented with a plaque for her 2016 work as President of ArkSHA!

# SAVE THE DATE!

## OCTOBER 11 - 13, 2017

### Unlock your Super Power!

## ArkSHA Annual Convention

### Hot Springs Convention Center & Embassy Suites

