



PRESIDENT'S PERSPECTIVE

Monica Scott
2012 ArkSHA President



I recently attended the Spring Conference of the Council of State Association Presidents (CSAP). This was an AWESOME opportunity. The conference was held in Anchorage, Alaska about two weeks ago. It was my first trip to Alaska. The high temps were in the low 50's. The word "BEAUTIFUL" is the word that comes to mind, but that really doesn't even begin to describe the vast beauty of the landscape. I left work just before noon on Wednesday to go to the airport, and I returned to work the following Monday. It was a very FAST trip, but I absorbed so much material in those few days!! My co-workers could not believe that I was going to Alaska, and I only missed 2 ½ days of work!

One of the presentations at CSAP was Resolving Evolving Ethical Dilemmas. This was presented by Dr. Shelly Chabon, ASHA President, and Theresa Rodgers, VP for Government Relations and Public Policy. It was a really inspiring experience to meet and interact with the leaders of each state as well as our National Association Leaders. You probably already know this, but our professional associations "have got it goin' on!"

As SLPs and Audiologists, we are frequently confronted with ethical and legal questions. The professional challenge is to more clearly delineate which category the issue falls into:
1) ethical dilemma, 2) legal issue, 3) interpersonal/communication problem, or 4) just one of those things that happens all of the time.

While we've all read the ASHA Code of Ethics at one point or another, some of the dilemmas presented

often fall into the gray area. How many times have you been subjected to an issue at your workplace that you know in your gut is not right, but you are not sure if it's truly illegal, an ethical violation, or just "uncouth"... and furthermore, what to do about it? Fairly frequently, Right? This presentation was an AWESOME one because it taught an Ethical Decision Making Model (Morris & Chabon, Rockhurst University, 2005). This model poses five questions and a flow chart. The answers to these five questions allow you to make a more concise decision about what is right, and what action to take in response to the posed dilemma. After you determine that an ethical dilemma truly exists, the questions to be addressed include: "What possible courses of action are permissible, impermissible, or obligatory?" and "What are the benefits and burdens of each action?" GOOD STUFF!

When the material was being presented, one of Dr. Chabon's questions was, "What is one of the first rules of conduct of our profession?" My first thought was "Do no harm". I'm not sure why that popped into my head, but I do know that I've always read the first part of the Hippocratic oath and it says, "First, do no harm." Also, I've heard '*Primum non nocere*', the Latin phrase of the same meaning, just the same in legalese as non-maleficence. Many, many ways to say the same thing, "Don't do anything that might harm someone else". I think the key word is harm, and in ethics that is the part that makes it "gray". Now, the answer that I provided of "Do no harm" was not exactly what Dr. Chabon was looking for because the question was geared toward "what must we ALWAYS do?" Which was making it obligatory, and the answer I provided was what must NEVER be done. It's all a matter of semantics, but it definitely got my "wheels to turning". I think it's very important when we're working with our co-workers (regardless of the setting) and with our consumer to really remember the ethics and the root of why we chose the career we did.

As I reflect on the conference, I'm reminded of one of my favorite quotes: "*Always do right ~ this will gratify some, and astonish the rest.*" --Mark Twain. Happy Summer to all!

Monica Scott

ArkSHA MISSION STATEMENT

To provide leadership, professional development, and quality membership services for audiologists and speech-language pathologists; to serve as the catalyst for innovative practices in prevention, assessment, diagnosis, and treatment of communication, hearing, balance, and swallowing disorders; and to advocate for the provision of quality programs and services and for the rights of people with communication hearing, balance, and swallowing disorders.

ArkSHA 2012 BOARD OF DIRECTORS

PRESIDENT

Monica Scott
Rehab Care Group, Inc.,
National Park Medical Center
101 Chiffon Lane
Hot Springs, AR 71913
501-617-8039
Monica1slp@hotmail.com

IMMEDIATE PAST PRESIDENT

Aleecia Starkey
Dawson Education Liaison Group
2402 Wildwood Ave., Ste 170
Sherwood, AR 72120
(501) 835-3330
aleecia.starkey@arkansas.gov

PRESIDENT-ELECT

Miranda Crabtree
Mid South Rehab
Fort Smith, AR 72903
(479)632-1438
miranda.crabtree@yahoo.com

TREASURER

Samuel Atcherson
UALR / UAMS
2801 S. University Ave.
Little Rock, AR 72204
(501) 683-7178
sratcherson@ualr.edu

SECRETARY

Cherin Pace
UAMS- Dental Hygiene
4301 West Markham, Slot 609
Little Rock, AR 72205-7199
501-603-1598
pacecherinc@uams.edu

VICE PRESIDENT AUDIOLOGY & HEARING SERVICES

Anna Serpente
Arkansas Children's Hospital
1 Children's Way
Little Rock, AR 72202
(501) 364-2239
serpenteak@archildrens.org

VICE PRESIDENT SPEECH-LANGUAGE PATHOLOGY SERVICES

Melodee Owens
Self - Employed
716 Arkansas Ave.
Mountain Home, AR 72653
(870) 480-7055
melodee.owens@hotmail.com

VICE PRESIDENT CONTINUING EDUCATION

Grayson Adams
Midsouth Rehab @ Trillium Park
1160 Hogan Lane
Conway, AR 72034
(501)327-2501
trillium_dor@midsouthrehab.com

VICE PRESIDENT - ELECT CONTINUING EDUCATION

Michelle Leach
Advanced Bionics
michelle_leach@yahoo.com

SLP AND AUD ADVISORY BOARD

Beckie Weaver
Harding University
P.O. Box 10765
Searcy, AR 72149-0001
(501) 279-4640
bweaver@harding.edu

Donna Smiley
Arkansas Children's Hospital
#1 Children's Way, Slot 113
Little Rock, AR 72202
smileydf@archildrens.org

INFORMATION CENTER

ARKANSAS BOARD OF EXAMINERS IN SPEECH-LANGUAGE PATHOLOGY AND AUDIOLOGY

101 E. Capitol, Suite 211
Little Rock, AR 72201
(501) 682-9180 Office
(501) 682-9181 Fax
Email: ABESPA@ipa.net

www.abespa.com

ARKANSAS MEDICAID WEBSITE
www.medicaid.state.ar.us

ARKANSAS DEPARTMENT OF EDUCATION
(501) 682-4475
www.arkansased.org

ARKANSAS DEPARTMENT OF HEALTH
(501) 661-2328

ASHA ACTION CENTER
(800) 498-2071
www.asha.org

ARKSHA OFFICE CONTACT INFORMATION

Account Executive:
Marilyn Porterfield
Best Association Management
P. O. Box 24103
Little Rock, AR 72221
Phone: (501) 244-0621
Toll Free: (877) 427-5742
Fax: (501) 224-0988
Email: arksha@arksha.org
www.arksha.org

Call for ArkSHA Honors and Awards Nominations

The Honors and Awards Committee is requesting nominations for ArkSHA Honors and Awards for 2012. Please nominate individuals for the following awards:

Louis M. DiCarlo Award for Clinical Achievement
Frank R. Kleffner Clinical Career Award
Paula J. Gober Public School Award
Research Award
Audiology Award
Honors of the Association

You may email your nominations to alecia.starkey@arkansas.gov; send your nominations by mail to ArkSHA at P.O. Box 24103, Little Rock, AR 72221, or fax to the ArkSHA office 501-224-0988. Be sure to include your name and a biographical sketch of the nominee including their professional history. Nominations should indicate the award you are nominating the individual for and why you think they should receive recognition. Awards and honors recipients will be announced at the Awards Reception at the Annual Convention in Little Rock, Arkansas.

Call for 2013 Board of Director Nominations

The Nominations and Elections Committee is actively seeking nominations for the 2013 ArkSHA Board of Directors. Who do you want to represent you on the Board of Directors? Do you know someone who has something to offer our professions? Perhaps you would like to sit on the Board. Nominate someone you know or even nominate yourself!

The Nominations and Elections Committee invites you to nominate individuals for one of the Board positions that will be open in 2013: President elect, Vice President-elect of Continuing Education, Vice President of Audiology & Hearing Services, and Secretary. Make your nominations as soon as possible. When nominating someone, please be sure they are willing to serve. The committee will contact them with further information.

You may email your nominations to alecia.starkey@arkansas.gov; mail nominations to ArkSHA at P.O. Box 24103, Little Rock, AR 72221. or even call in nominations to (501) 244-0621.



SAVE THE DATE

2012 ArkSHA Convention



“Be the Difference!”

October 10 - 12, 2012

Peabody Hotel -- Little Rock, AR



2012 ArkSHA Convention Speakers

“Be the Difference!”



Neil T. Shepard, PhD, CCC-A, is Chair of the division of Audiology and Director of the Dizziness and Balance Disorders Program at Mayo Clinic – Rochester and Professor of Audiology in the Mayo Clinical School of Medicine. He received his undergraduate and masters training in Electrical and Biomedical Engineering from University of Kentucky and Massachusetts Institute of Technology. He completed his PhD in auditory electrophysiology and clinical audiology from the University of Iowa in 1979. He has specialized in clinical electrophysiology for both the auditory and vestibular systems. Activity over the last 30 years has concentrated on the clinical assessment and rehabilitation of balance disorder patients and clinical research endeavors related to both assessment and rehabilitation.

Keli Richmond, MS, CCC-SLP, is a speech-language pathologist specializing in early literacy development. She has a Master of Science Degree in Speech-Language Pathology, a Bachelor of Arts Degree in Speech-Language Pathology, a Bachelor of Arts Degree in Audiology, a Minor Focus in Special Education and a Teaching License. Keli has over 14 years experience in the speech and literacy disciplines. Currently, she conducts in-service training for school-based personnel, presents accredited continuing education seminars nationwide for Northern Speech Services, and speaks at Speech-Language-Hearing Conventions, Educator Conferences and related events. She is the author of Literacy Speaks!® ~ a comprehensive program driven by orthographic instruction (printed cues) that focuses on improving speech intelligibility, enhancing phonological awareness and expanding language skills while developing a strong literacy foundation. Some highlights of Keli’s career are receiving the “Professional Achievement Award in Recognition of Advancement of Knowledge in Clinical Practice” from the Indiana Speech-Language-Hearing Association (ISHA) and the “Award for Continuing Education” (ACE) from the American Speech-Language-Hearing Association (ASHA). The ISHA award is based on outstanding professional development and community involvement. The ASHA award is based on commitment to lifelong learning. Keli was a founding member of the United Way Women’s Initiative. The Women’s Initiative is an organization dedicated to closing educational gaps through early literacy development. She is actively involved in community literacy projects.

Tina M. Stody, PhD, CCC-A, is currently an Associate Professor at the University of Northern Colorado. In 2008 Dr. Stody was co-PI on a \$100,000 grant that supported the development of a cochlear implant satellite clinic at the University of Northern Colorado. Dr. Stody works collaboratively with an SLP colleague to teach an undergraduate course on aural rehabilitation and a graduate course on cochlear implants. She also shares supervision responsibilities of the provision of aural rehabilitative services by graduate speech-language pathology and audiology students to children who are deaf and hard of hearing. As a member of the Colorado Cochlear Implant Consortium, works with professionals across disciplines to promote high quality services and outcomes for students with cochlear implants. Dr. Stody has additional interests in auditory processing disorders and auditory electrophysiology, and is co-editor with Dr. Samuel Atcherson of a textbook entitled “Auditory electrophysiology: A clinical guide” published by Thieme.



2012 ArkSHA Convention Speakers

“Be the Difference!”

Pam Marshalla, MA, CCC-SLP, has been a practicing speech-language pathologist since 1976. She completed a Master’s Thesis in phonology at the University of Illinois under the direction of Elaine Pagel Paden and Barbara Williams Hodson. She has worked with clients of all ages and ability levels in schools, hospitals, university clinics, parent-infant programs, residential facilities, and private practice. Pam is the author of nine books, one standardized assessment tool, and one children’s music CD. She has taught hundreds of continuing education courses to tens of thousands of speech-language pathologists in the United States and Canada. These have included numerous invited local, state, regional, and national conventions. Pam is a “clinician’s clinician” whose practical books and seminars successfully integrate research data and clinical experiences.

Peter R Johnson, PhD, CCC-SLP, is currently the Speech Mentor with Select Medical where he develops new clinical programs, conducts continuing education seminars, provides small group and one-on-one mentoring nationally and maintains the clinic hotline. His previous experience includes working in acute care, home care, outpatient clinics and long-term care. Dr. Johnson received his MS and PhD in speech language pathology from the University of Pittsburgh and an Executive Graduate Degree in Health Care Financial Management from Ohio State University. He has co-authored several books including *Business Matters: A Guide for the Speech Language Pathologist*; *Drugs and Dysphagia*; and is currently working on the book *Drugs and Rehabilitation* which will be published in 2012.

Dr. Johnson served as a Column Editor for the American Speech Language Hearing Association Special Interest Division 11 and Special Interest Division 13; on the Executive Board of the Florida Association of Speech Language Pathology and Audiology for eight years; and was a three-time recipient of the President’s Award as well as the Outstanding Service Award from the Florida Association of Speech Language Pathology and Audiology. He currently serves as the Vice Chair for the Florida Department of Health/Board of Speech Language Pathology and Audiology; and is affiliated with Nova Southeastern University where he is an adjunct faculty and dissertation chair.

Shaum Bhagat, PhD, CCC-A, is an Associate Professor in the School of Communication Sciences and Disorders at the University of Memphis. He received his B.A. degree in Communications from Washington State University, and M.S. degree in Speech and Hearing Sciences from the University of Arizona. Dr. Bhagat worked for several years as an audiologist in ENT offices and hospitals before returning for his Ph.D. degree in Communication Sciences and Disorders, which was obtained from The University of Texas at Austin. Prior to joining the faculty at the University of Memphis in 2005, Dr. Bhagat was an Assistant Professor in the Department of Communication Sciences and Disorders at Louisiana State University in Baton Rouge. Dr. Bhagat’s research interests focus on examining cochlear physiology through measurement of otoacoustic emissions in listeners with typical (normal) hearing thresholds and listeners with cochlear hearing loss. Several studies completed in Dr. Bhagat’s lab have provided insights into the effects of intense sounds and ototoxic drugs on otoacoustic emissions measured in children and adults. His research has been published in several national and international peer-reviewed journals and he is the author of a book chapter on ototoxicity in infants and young children.

Addison Ferguson Youth Poster Ambassador

Hi! My name is Addison Ferguson. When I was born, I did not pass my newborn hearing screening and was diagnosed with profound hearing loss at Arkansas Children's Hospital when I was just a few weeks old and started to wear hearing aids. Don't I just look adorable?



I started speech and language therapy with Ms. Michelle at ACH when I was just a baby and worked on learning to listen with my hearing aids. As I got closer to my first birthday, my mommy and daddy, Kelli and Jarrod Ferguson, decided that they wanted me to get a cochlear implant because the hearing aids weren't able to give me access to enough sound to learn to talk, which is the communication option that they chose. Right after my first birthday, I had surgery and got my first cochlear implant. Still cute, even when recovering! A few weeks later, I went to see my audiologist, Ms. Jordan King to have my cochlear implant activated. I was ready to hear it all! Here are some pictures of how hard I worked that day and how excited I was to be able to hear new sounds that I had never heard before.

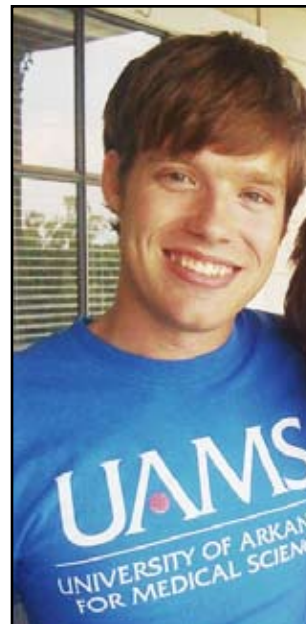
As I learned how to listen with my cochlear implant, I also began to learn how to talk. My mommy and daddy worked really hard with me, brought me to therapy every week at ACH, and learned how to be my live in therapist at home twenty-four hours a day, seven days a week. At the same time as they were learning about my hearing loss, my mommy was in graduate school for speech pathology and my daddy worked full time, and they also were taking care of my big brother, Logan. After getting my second cochlear implant when I was eighteen months old, I kept hearing more and more and began talking more and more. I thought that even my toy puppy dog needed a cochlear implant too!

In the past three years, I have learned to babble, use single words, and now use conversation to just talk and talk and talk. My mommy says that sometimes I talk too much! I love to play dress up, especially if I can dress up like a Disney princess. I started dance class this year and can't wait until my recital so that I can sing and dance on stage.

Now that I am four years old, my most recent language testing all scored within normal limits. I am still working on articulation, but sometimes my mommy and Ms. Michelle think that it's too cute when I say "memonade" instead of "lemonade" and we might just not fix that one yet. I go to a mainstream preschool and have a lot of friends. One more year and I'll be ready to take on the world of kindergarten!



Christopher Engelkes Adult Poster Ambassador



Chris Engelkes has a hearing loss and was once in the Preschool Language Enrichment Program (PLEP) as a child here at UALR. He later enrolled at UALR in the Bachelors program in Speech Pathology and graduated in 2009. He applied to the UAMS/UALR Doctor of Audiology Program and entered in the Fall of 2009.

We now have a born and raised Arkansan with communication disorder who will soon be among our ranks as a professional. Chris is currently finishing up his AuD research project that surveyed 90+ audiologists with hearing loss around the country. This summer and for the next 12 months, he will be a 4th year extern at an ENT practice in Tucson, AZ. We are especially proud of Christopher.

WANTED: More Members!

You are the key to building up the membership of ArkSHA! We currently have 281 members and average around 500 by late-summer every year. Our membership consists of active members (licensed speech-language pathologists and audiologist), Associate members (have a degree in speech or hearing or an allied Profession) and Students that are enrolled full-time in speech-language pathology or audiology. In 2011 there were 2165 speech-pathologist and audiologists licensed in Arkansas. You can see based on those numbers the ability that our association has to grow.

Start to 'Be the Difference' now by recruiting new members. Share ArkSHA with a colleague that has never been a member and you may receive your dues for 2013 FREE. Enclosed in this newsletter is a copy of the membership application and it can also be found on our website at www.arksha.org, have the potential new member put your name on the recruited/referred by line at the top of the form, and whoever recruits the most new members for 2012 by the convention will receive their dues for 2013 FREE!

Call for Papers!

Hello ArkSHA! I hope everyone is looking forward to another great ArkSHA convention in 2012! I would like to challenge our members across the state to make the choice to "Be the Difference." I am very excited about the featured speakers we have lined up for this year, but I know many of you would make terrific speakers as well! Help us make a difference by considering sharing your vast knowledge and experience at the convention.

ArkSHA is now accepting call for papers submissions--the deadline has been extended to **June 20, 2012!**

The call for papers form is included in the newsletter. Please complete this form and submit to our management office. You may fax to 501-224-0988, mail to PO BOX 24103 Little Rock, AR 72221, or email to arksha@arksha.org. Thank you for your consideration to present this year and help "Be the Difference!"

Grayson Adams
VP of Continuing Education

CSAP Roundtable

Your ArkSHA Board members, Monica Scott, President, and Miranda Crabtree, President-Elect, attended the spring CSAP in Alaska in May. While there, they participated in a roundtable discussion as pictured below.



Housekeeping Tips for the Convention

✓ Fill out and submit your 'Call for Papers' by **June 20, 2012** (Deadline has been extended!).

✓ Book your hotel room at the Peabody Hotel by September 19

Information/items you will need to have at the convention:

- ASHA License Number
- ABESPA License Number
- Checkbook or Visa/MasterCard for Dues
- Membership Pin
- Canned food item to donate for a chance to win a free 2013 membership

ArkSHA Board Meeting Summary

April 13, 2012

The ArkSHA Board meeting was held on April 13, 2012, at the office of Best Association Management (BAM). Those in attendance were Monica Scott-President, Miranda Crabtree-President-Elect, Samuel Atcherson-Treasurer, Present: Grayson Adams-VP-Elect Continuing Education, Michelle Leach-VP Continuing Education, Melodee Owens VP SLP Services, Courtney Sheppard-Lobbyist, and Marilyn Porterfield-BAM

Minutes from the previous meeting were reviewed and approved.

Committee Reports

Treasurer- Sam Atcherson presented the financials and the board approved them.

Past President- Aleecia Starkey was not present, but it was discussed that it might be a good idea to add award descriptions and past awardees to the website. It was also discussed about moving up the deadline for Poster Ambassadors.

President-Elect -Miranda Crabtree reported that current membership numbers are at 273. This is 40 more than ArkSHA had at this time in 2011.

Vice-President for Audiology and Hearing Services/Vice-President for Speech Pathology Services - Melodee Owens and Anna Serpente will get together and discuss the options for the summer meeting. The option of have a Webinar/Video Conference-Live streaming to other locations-was discussed. It was decided to hold off on trying to do this for summer 2012, but look into it for summer 2013.

Vice-President for Continuing Education - Grayson Adams reported that all speakers for the convention are decided on, just working on final contracting logistics. Laura Bedner will be speaking on CORE on Friday. Grayson and Marilyn will create and distribute an exhibitor surveys at the convention. The board voted to increase the fee for non-profit exhibitors to \$75 to cover the costs that ArkSHA has to pay the venue.

Vice-President Elect for Continuing Education - Michelle Leach is working on getting all CE administrator applications submitted to be switched over to her. AAA Application was submitted and she is working on getting ASHA and ADE submitted.

OLD BUSINESS

CSAP Meeting - Monica and Miranda will be attending CSAP and Marilyn will book their flights and hotel rooms.

Board Retreat/Strategic Plan - The board decided not to do a board retreat this year and to continue with the odd number years holding a board retreat, which will be in 2013. Miranda and Marilyn will put together some options for a board retreat with a strategic planning session for February 2013.

NEW BUSINESS

Proclamation for Better Hearing & Speech Month - A letter has been submitted to the Governor requesting that May be Better Hearing and Speech Month. We are currently waiting reply.

SEAL (Dixie Branscum)/STAR (Cheri Stevenson)/SMAC (Cathy Cranston) - Monica is checking with each but still waiting to hear from a few on details.

The meeting was adjourned at 4:20 p.m.



Phone: (501) 244-0621
 Fax: (501) 224-0988
 Email: arksha@arksha.org
www.arksha.org

CALL FOR PAPERS

2012 ArkSHA Convention

October 10-12, 2012-Peabody Hotel Little Rock

Please fill out one form per presenter for each presentation
 Email attachments to: arksha@arksha.org with a subject line saying "ArkSHA Call for Papers"

PRESENTATION TITLE (maximum of 10 words):

DEADLINE FOR ALL PRESENTERS- Deadline Extended to June 20
 All Presentations Shall be Made on Friday 10/12/2012

____ PROFESSIONAL PRESENTATION ____ STUDENT PRESENTATION

Speaker's Name (w/degree/certification): _____
 Job Title (or Student): _____
 Employer (or School): _____
 Complete Mailing Address: _____
 Daytime Phone: _____ Home Phone: _____
 Email: _____

PROFESSIONAL PRESENTERS must submit all of the following in Word format by email by May 31, 2012 in order that continuing education credit may be applied for:

- This Application (May be faxed or scanned and emailed)
- Narrative Abstract (50 to 75 words) - for the Convention Program
- BRIEF Bio - (max. 100 words) - for the Convention Program
- Current Resume
- Minimum of 3 Learning Objectives

PLEASE SPECIFY: ____ 1 Hour Presentation ____ 2 Hour

STUDENT PRESENTERS must submit all of the following in Word format by email by May 31, 2012 in order that continuing education credit may be applied for:

- This Application (May be faxed or scanned and emailed)
- Narrative Abstract (50 to 75 words) - for the Convention Program

Subject Matter Professor: _____ Phone #: _____

PLEASE SPECIFY: ____ 15 Minute Presentation ____ 30 Minute Presentation

The ArkSHA Convention Program Planning Committee reserves the right to select or deny any presentation in order to provide an appropriate variety and number of timely topics within the logistical facilities and timeframes available.

**ARKANSAS SPEECH-LANGUAGE-HEARING ASSOCIATION
APPLICATION FOR MEMBERSHIP**

First Name: _____ Middle: _____ Last Name: _____
Recruited/Referred by: _____

APPLYING FOR:

_____ Full member, Speech-Language Pathologist- -\$60.00 SLP # _____
Requires a Master's degree in Speech-language Pathology & adherence to the Code of Ethics adopted in 1991

_____ Full member, Audiologist - \$60.00 AUD # _____
Requires a Master's degree in Audiology & adherence to the Code of Ethics adopted in 1991

_____ Associate member-\$45.00
Requires an undergraduate degree in speech or hearing or an allied Profession. Must abide by the spirit of the Code of Ethics

_____ Student member - \$25.00
Requires full-time enrollment in speech-language pathology or audiology

Former Student Members will receive a \$10.00 discount on initial Full member dues provided they have current student membership status when they apply.

Home Address _____ City _____ State _____ Zip _____

Home Phone _____ Email Address _____

Place of Employment _____

Address _____ City _____ State _____ Zip _____

County _____ Work Phone _____ Fax _____

Full & Associate Members: Academic Degree _____ Year _____ Institution _____

CERTIFICATION/LICENSURE (check all that apply)

_____ ASHA CCC-SLP _____ ASHA CCC-A _____ ASHA CF-SLP _____ ASHA CF-A

_____ AR Licensure, SLP _____ AR Licensure, A _____ Public School Certification/Licensure

Student Members:

A. I am currently a full-time undergraduate/graduate (circle one) student at: _____
(name of university)

B. Estimated date of graduation: _____

C. Signature of Program Chair or Advisor: _____

** Membership dues are not deductible as charitable contributions for federal income tax purposes. In addition 21 % of your dues spent for governmental relations are not deductible as a business expense.*

SEND APPLICATION & DUES TO:

ArkSHA
P.O. Box 24103
Little Rock, AR 72221

FAX: 501-224-0988

Questions call: 501-244-0621

Check #: _____
Visa/ MasterCard #: _____ - _____ - _____ - _____
Exp. Date: _____ CVV: _____
Name on Card: _____
Billing Address (if diff from above): _____